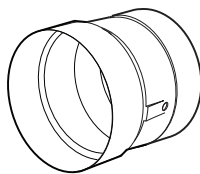


# Use and Care Guide

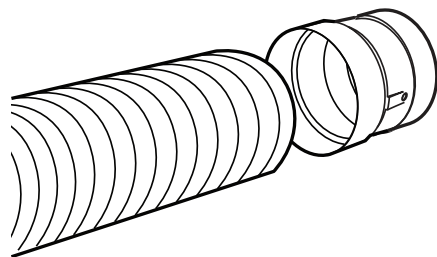
## Dryer Lint Clean Out Connector



### Installation

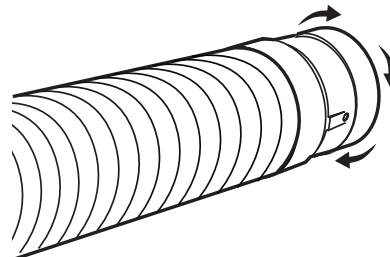
#### 1 ATTACHING THE TRANSITION DUCT

- Unravel a 6 in. portion of the duct, and insert one end of the dryer lint clean out connector onto the end of one piece of duct.



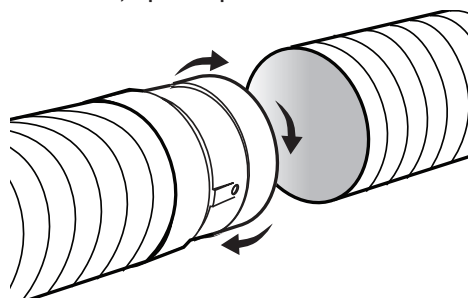
#### 2 THREADING ONTO THE CONNECTOR

- Turn the connector counterclockwise until all threads on the dryer lint clean out connector grasp firmly onto the outside of the duct.



#### 3 ATTACHING THE OTHER TRANSITION DUCT

- To attach a duct to the other end of the dryer lint clean out connector, repeat steps 1 and 2.



### Warranty

#### WHAT IS COVERED

All merchandise is warranted to be free from defects in workmanship and material for one year from the date of purchase. This includes normal wear and performance failure on items. The manufacturer will replace or repair at their option.

#### WHAT IS NOT COVERED

This warranty only covers normal wear and performance failure. It does not cover any malfunction, performance failure, or defect arising from the misuse, abuse, neglect, or modification of the product. Any damage or malfunction inflicted upon the product by the user or other external sources, or any failure to comply with the warnings and instructions, is not covered.

For further assistance visit [www.DundasJafine.com](http://www.DundasJafine.com).